

**Abbreviations**

C = Centre Line  
 NOM = Nominal

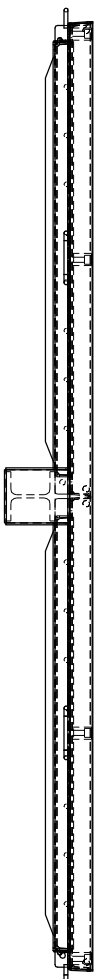
C/O = Clear Opening  
 O/A = Overall

S = Span  
 L = Length

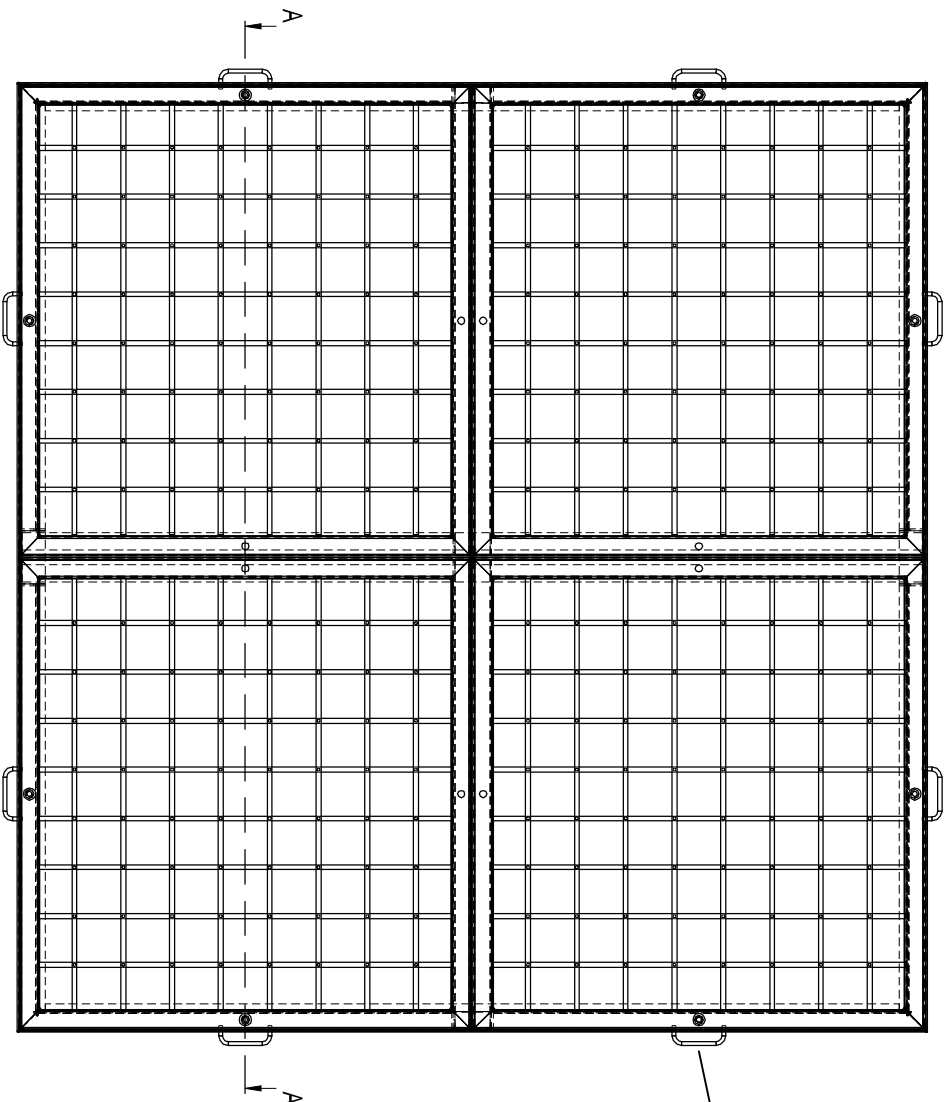
W = Width  
 D = Depth

**Before starting work refer to installation instructions**

**DO NOT SCALE**



A - A



Holdfast 'concrete anchor' for tying into concrete surround

- ALU = Aluminium (3mm gauge)
- GMS = Galvanised Mild Steel (3mm gauge)
- AISI 304 = Stainless Steel Grade 304 (3mm gauge)

**Elkington**

Elkington GmbH  
 Baarerstrasse 110B,  
 6302 Zug, Switzerland,  
 T: + 41 79 641 33 85  
 E: info@elkington.eu  
 www.elkington.eu

Product / Project: / Customer:

**MULTIPLE**

Drawing Number:

Revision:

Scale:

Date: **26.02.2014**

Drawn By:

**JD**

Material: **GMS - AISI 304 - ALU**

Checked By:

Drawing Ref: