

**Abbreviations**

$C_c$  = Centre Line  
NOM = Nominal

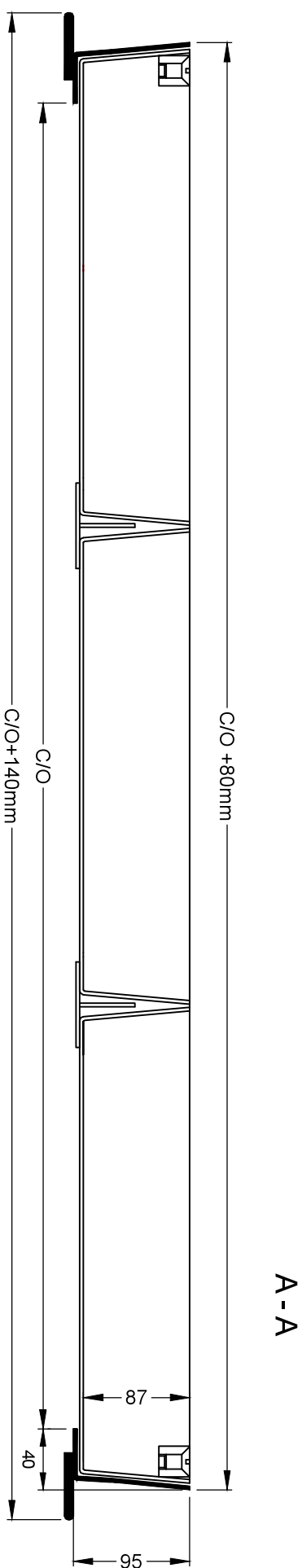
C/O = Clear Opening  
O/A = Overall

S = Span  
L = Length

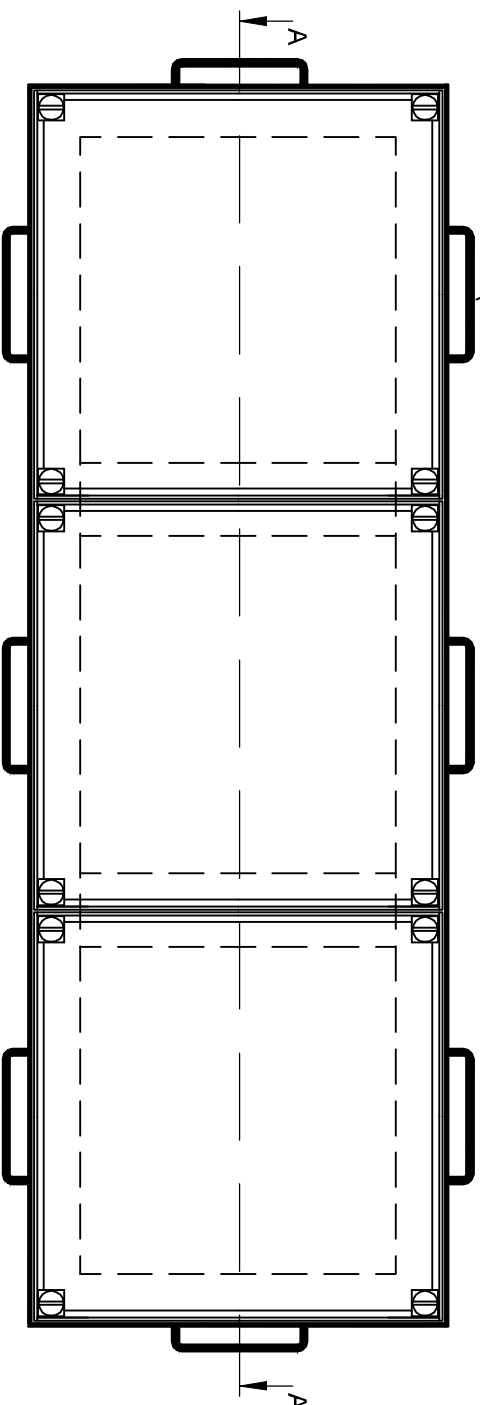
W = Width  
D = Depth

**Before starting work refer to installation instructions**

**DO NOT SCALE**



Holdfast 'concrete anchor' for tying into concrete surround



GMS = Galvanised Mild Steel (3mm gauge)  
AISI 304 = Stainless Steel Grade 304 (3mm gauge)

**Elkington**

Elkington GmbH  
Baarerstrasse 110B,  
6302 Zug, Switzerland,  
T: + 41 79 641 33 85  
E: info@elkington.eu  
www.elkington.eu

Product / Project / Customer:  
**XPAVE 95 DUCT**

Drawing Number:

Revision:

Scale:

Date: **26.02.2014**

Drawn By:

**JD**

Material:  
**GMS - AISI 304**

Checked By:

Drawing Ref: